



MEDICARE  
SOLUTIONS

Order Online! [hap.org/otc](http://hap.org/otc)

# 2021

OVER-THE-COUNTER (OTC)  
PRODUCT CATALOG

---



Get Over-the-Counter products ***every quarter!***

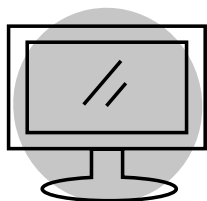
Y0076\_2021 OTC Catalog\_C





As a member of HAP, you have an Over-the-Counter (OTC) benefit every quarter. This benefit allows you to get OTC products you may need. Be sure to use your benefit amounts before the end of every quarter. Simply order online, call **1-844-427-6821** (TTY: 711), or mail your completed order form. Your order will be shipped directly to your door.

## ORDER GUIDELINES



### ORDER ONLINE

You may place an order online using your HAP OTC website at **[hap.org/otc](http://hap.org/otc)**.

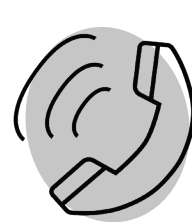
**Remember to save your username and password to order again during your next benefit period.**



### ORDER BY MAIL

You may place an order by completing and mailing in the order form included in your OTC Product Catalog.

**If the end of the OTC benefit period is approaching and you do not think your order form will be received in time, you may order online or call in your order.**



### ORDER BY PHONE

If you have questions or would like to place an order over the phone, OTC Advocates are available Monday – Friday from 8:00 a.m. to 11:00 p.m. EST at 1-844-427-6821 (TTY: 711).

- For delivery, please allow 5-7 business days from the time your order is placed.
- You must use your full benefit amount in two orders. Unused benefits will not roll over into the next quarter.
- Your order total may not exceed your benefit amount. Cash, checks, credit cards, or money orders are not accepted under this OTC benefit.
- Your order total will be applied to the benefit period in which the order is received.
- OTC products are intended for member use only to help with a health or medical need. HAP prohibits the use of this benefit to order OTC items for family members and friends.
- Due to the personal nature of these products, returns are not accepted.
- Items in the OTC catalog may change throughout the year. For the most up-to-date listing of OTC products available, go to **[hap.org/otc](http://hap.org/otc)**.
- OTC items are available through home delivery only. Products may not be purchased at a local retail pharmacy or through any source other than the HAP OTC benefit channels listed above.
- The health information provided in the catalog is general in nature and is not medical advice or a substitute for professional health care. All product and company names are trademarks™ or registered® trademarks of their respective holders. Use of them does not imply any affiliation with or endorsement by them.

# HOW TO USE YOUR OTC WEBSITE

Online Access to Your OTC Benefit is Fast, Easy, and Secure!

**Your OTC benefit website offers you many convenient features. You are able to...**

- Browse the OTC products that are available to you
- Access a digital copy of your OTC catalog
- Monitor your available balance while you shop
- Track your order and view your order history
- Manage your account
- And more!

If you have already created an account online, just log in to get started!

If it's your first time ordering online, you will need to register and set up your account.

**Registration is easy and takes only a few minutes to complete.**

Access your HAP OTC website at **[hap.org/otc](http://hap.org/otc)**, indicate that you are a first-time user by clicking on the 'Not Registered? Sign Up Now' button, and enter your information exactly as it appears on your Health Plan ID card. You will need the following:

- First and last name
- Health Plan Member ID number
- State
- Date of birth as MM/DD/YYYY
- Current email address

You will then create a unique username and password for your account. You will be asked to choose and answer some security questions, so if you forget or misplace your username or password, we can send you a new one. Now you can log in and access your OTC benefit online, 24/7.

If you need any assistance, please give the Order Fulfillment Center a call Monday – Friday from 8 a.m. to 11 p.m. EST at 1-844-427-6821 (TTY: 711). Our friendly and knowledgeable advocates are happy to help you take full advantage of your OTC benefit.

**Please note:**

Orders for the benefit period must be placed prior to midnight Eastern Time of the last day of the period.

Item #	Product	Packaging	Strength	Price
<b>ALLERGY</b>				
1090	Cetirizine HCL (Allergy Tablets)	14 ct	10 mg	\$7.00
2003	Cetirizine HCL (Allergy Tablets)	45 ct	10 mg	\$11.00
1428	Diphenhydramine HCL (Children's Allergy Liquid)	4 oz	12.5 mg / 5 ml	\$6.00
1804	Fexofenadine (Allergy Tablets)	30 ct	180 mg	\$16.00
1946	Fluticasone Propionate (Allergy Nasal Spray, 24-hour)	120 spray	50 mcg	\$25.00
1611	Loratadine (Allergy Tablets)	100 ct	10 mg	\$16.00
2020	Loratadine (Allergy Tablets)	365 ct	10 mg	\$25.00
2033	Loratadine (Allergy Tablets)	10 ct	10 mg	\$5.50
1881	Nasacort	60 spray	-	\$24.00
1922	Nasal Decongestant Inhaler - Levmetamfetamine	.007 oz	50 mg	\$8.00
1091	Nasal Decongestant Spray, 12-Hour	1 oz	0.05 %	\$6.00
1052	Nasal Spray, Saline	1.5 oz	0.65 %	\$5.50
<b>ANTACIDS &amp; ACID REDUCERS</b>				
1313	Alka-Seltzer	36 ct	-	\$11.00
1006	Antacid / Anti-Gas Liquid	12 oz	-	\$8.00
1346	Antacid Chewables	150 ct	500 mg	\$7.00
1314	Effervescent Antacid & Pain Relief	36 ct	-	\$7.00
1949	Esomeprazole Magnesium (Acid Reducer, Delayed Release) *	42 ct	20 mg	\$23.00
1108	Famotidine (Acid Reducer) *	30 ct	10 mg	\$7.50
1970	Omeprazole (Acid Reducer, Delayed Release) *	42 ct	20 mg	\$25.00
1966	Omeprazole (Acid Reducer, Delayed Release, Dissolvable) *	42 ct	20 mg	\$26.00
1800	Simethicone (Gas Relief)	100 ct	80 mg	\$8.00
2034	TUMS Extra Strength	48 ct	750 mg	\$7.50
<b>ANTICANDIDAL (YEAST)</b>				
1115	Clotrimazole (Vaginal Antifungal 7-Day Cream with Applicator)	45 gm	1%	\$10.00
1117	Miconazole (Vaginal Antifungal 3-Day Cream with Applicator)	1 kit	2%	\$16.00
1119	Tioconazole (Vaginal Antifungal 1-Day Cream with Applicator)	1 ct	6.50%	\$19.00



Item #	Product	Packaging	Strength	Price
<b>ANTI-DIARRHEAL, LAXATIVES &amp; DIGESTIVE HEALTH</b>				
1316	Beano	30 ct	-	\$9.00
1128	Bisacodyl (Stimulant Laxative, Enteric Coated)	100 ct	5 mg	\$6.50
1969	ClearLax Unflavored Powder Laxative	8.3 oz	17 g	\$13.50
1126	Docusate Sodium (Stool Softener)	100 ct	100 mg	\$8.00
1130	Docusate Sodium plus Sennosides (Natural Vegetable Laxative)	60 ct	8.6 mg / 50 mg	\$7.00
1733	Enema	4.5 oz	-	\$5.50
1124	Ex-Lax	8 ct	15 mg	\$8.00
1155	Fiber Tablets ‡	60 ct	500 mg	\$10.00
1125	Glycerin Suppository Laxative	25 ct	2 gm	\$7.00
1067	Lactase Capsules	60 ct	9,000 FCC Units	\$10.00
1133	Loperamide HCL (Anti-Diarrheal Tablets) *	12 ct	2 mg	\$6.00
1889	Magnesium Citrate (Saline Laxative, Lemon)	10 oz	-	\$6.00
1011	Milk of Magnesia	12 oz	1,200 mg	\$6.50
1317	Pepto-Bismol Cherry	12 oz	525 mg / 30 ml	\$11.00
1045	Pink Bismuth Chewable Tablets	30 ct	262 mg	\$7.50
1318	Pink Bismuth Liquid	8 oz	525 mg / 30 ml	\$7.00
<b>ANTI-FUNGAL</b>				
1047	Clotrimazole (Athlete's Foot Cream)	1.5 oz	1%	\$9.50
1135	Miconazole Nitrate (Anti-fungal Cream)	1 oz	2%	\$9.00
1874	Miconazole Nitrate (Athlete's Foot Spray)	4.6 oz	2%	\$10.50
1046	Terbinafine HCL (Athlete's Foot Cream)	.5 oz	1%	\$11.50
1064	Tolnaftate (Anti-fungal Cream)	1.25 oz	1%	\$7.00
<b>BATHROOM SAFETY &amp; FALL PREVENTION</b>				
1764	Adjustable Transfer Bench	1 ct	-	\$80.00
1728	Bath Bench with Back	1 ct	-	\$60.00
1727	Bath Bench without Back	1 ct	-	\$50.00
1459	Bath Mat, Non-Skid	1 ct	-	\$15.00
1730	Bath Tub Safety Rail	1 ct	-	\$38.00
2009	Bed Assist Bar	1 ct	-	\$55.00
1984	Bedside Commode *	1 ct	-	\$65.00
1726	Folding Cane Ergonomic Handle *	1 ct	-	\$20.00
1790	Gait Belt - 60"	1 ct	-	\$16.00

Item #	Product	Packaging	Strength	Price
1791	Gait Belt - 72"	1 ct	-	\$17.00
2007	Handheld Shower Head	1 ct	-	\$25.00
1798	Knurled Chrome Grab Bar - 12"	1 ct	-	\$19.00
1797	Knurled Chrome Grab Bar - 24"	1 ct	-	\$22.00
2005	Knurled Chrome Grab Bar - 32"	1 ct	-	\$36.00
1983	Nightlight	2 ct	-	\$15.00
1776	Quad Cane, Large Base *	1 ct	-	\$28.00
1777	Quad Cane, Small Base *	1 ct	-	\$25.00
1729	Raised Toilet Seat	1 ct	-	\$35.00
1950	Raised Toilet Seat with Arms	1 ct	-	\$65.00
1780	Safety Treads, Tub & Stair	1 pack	-	\$9.00
1460	Shower Mat, Non-Skid	1 ct	-	\$17.50
1779	Toilet Safety Rails	1 set	-	\$40.00
2008	Treaded Slipper Socks, One Size Fits Most	1 pair	-	\$7.00
<b>COLD &amp; FLU</b>				
1360	Cepacol Sore Throat Lozenges	16 ct	-	\$8.00
1166	Cough & Cold for High Blood Pressure	16 ct	-	\$7.00
1056	Cough Drops, Cherry	30 ct	5.8 mg	\$3.00
1833	Cough Drops, Honey Lemon	30 ct	-	\$3.00
1834	Cough Drops, Menthol	30 ct	-	\$3.00
1182	Cough Drops, Sugar Free, Cherry	25 ct	5.8 mg	\$4.00
1054	Cough Syrup, Expectorant	4 oz	200 mg / 10 ml	\$6.00
1323	Diabetic Tussin DM	4 oz	-	\$9.50
1180	Guaifenesin (Cough Expectorant)	100 ct	200 mg	\$10.00
1178	Mucus Relief DM Expectorant & Cough Suppressant (Guaifenesin 400 mg / Dextromethorphan HBr 20 mg)	30 ct	400 mg / 20 mg	\$10.00
1965	Mucus Relief DM Expectorant & Cough Suppressant, Extended Release	14 ct	1,200 mg / 60 mg	\$16.00
1357	Multi-Symptom Cold Formula	24 ct	10 mg / 5 mg / 325 mg	\$8.00
1931	Nasal Rinse Kit, Saline	1 kit	-	\$18.00
1361	Night Time Cold & Flu	4 oz	12.5 mg / 30 mg / 650 mg	\$6.50
1792	Personal Steam Inhaler	1 ct	-	\$50.00



Item #	Product	Packaging	Strength	Price
1352	Phenylephrine HCL (Nasal Decongestant PE)	36 ct	10 mg	\$7.00
1176	Sore Throat Lozenges, Cherry	18 ct	-	\$6.00
1904	Sore Throat Spray, Cherry	6 oz	-	\$7.00
1164	Vapor Rub	3.5 oz	4.7% / 1%	\$7.00
<b>COLD SORE &amp; MEDICATED LIP PRODUCTS</b>				
1152	Abreva	2 gm	10%	\$24.00
1256	Blistex Lip Ointment	6 gm	-	\$5.00
1153	Herpecin-L Lip Balm	.1 oz	1%	\$10.00
1359	Releev Cold Sore Treatment	6 ml	0.13 %	\$22.50
<b>DENTAL &amp; DENTURE CARE</b>				
1817	Biotene Dry Mouth Oral Rinse	16 oz	-	\$13.00
1818	Biotene Dry Mouth Spray	1.5 oz	-	\$11.50
1749	Dental Travel Kit	1 ct	-	\$10.00
1747	Denture Brush	1 ct	-	\$6.00
1032	Denture Cleaning Tablets	40 ct	-	\$7.00
1653	Efferdent Plus Mint Tablets	36 ct	-	\$9.00
1842	Effergrip Denture Cream Adhesive	1.5 oz	-	\$7.00
1843	Effergrip Denture Cream Adhesive	2.5 oz	-	\$9.00
1745	Fingertip Tooth & Gum Massager	1 ct	-	\$9.00
1187	Fixodent	.75 oz	-	\$6.50
1751	Interdental Flossups	90 ct	-	\$5.50
1748	Interdental Gum Brushes	10 ct	-	\$6.00
1888	Orajel Medicated Sore Mouth Swabs	12 ct	-	\$9.50
1454	Orajel Pain Relief	.25 oz	20%	\$11.00
1750	Oral Care System Kit	1 ct	-	\$12.50
1286	Oral Pain Relief	.5 oz	20%	\$7.00
1324	Polident Denture Cream	3.9 oz	-	\$9.00
1892	Polident Overnight	84 ct	-	\$12.00
1455	Reach Waxed Dental Floss - Mint	55 yd	-	\$5.00
1902	Reach Waxed Dental Floss - Unflavored	55 yd	-	\$4.00
1746	Tongue Cleaner	1 ct	-	\$6.00
2015	Toothbrush, Battery Powered	1 ct	-	\$20.00
1830	Toothbrush, Colgate, Adult Medium	1 ct	-	\$3.00
1413	Toothbrush, Colgate, Adult Soft	1 ct	-	\$3.00

Item #	Product	Packaging	Strength	Price
1894	Toothbrush, Professional Care Electronic	1 ct	-	\$75.00
1450	Toothbrush, Rechargeable	1 ct	-	\$37.00
1948	Toothbrush, Soft 2-pack	2 ct	-	\$6.00
1412	Toothbrush, Tek Pro, Angled Soft	1 ct	-	\$3.00
1831	Toothpaste, Colgate	4 oz	-	\$6.00
1838	Toothpaste, Crest Sensi-Relief	4.1 oz	-	\$9.50
1414	Toothpaste, Pepsodent	5.5 oz	-	\$5.50
1903	Toothpaste, Sensitive Teeth	4.3 oz	-	\$5.00
1716	Toothpaste, Ultrabrite Advanced Whitening	6 oz	-	\$6.00
1744	Water Jet	1 ct	-	\$45.00
1743	Water Jet Replacement Tips	5 ct	-	\$17.00
<b>DIABETES CARE</b>				
1839	Diabetic Skin Relief Foot Cream	3.4 oz	-	\$12.00
1957	Diabetic Socks, Black, Large 3-pack	3 pair	-	\$9.00
1956	Diabetic Socks, Black, Medium 3-pack	3 pair	-	\$9.00
1958	Diabetic Socks, Black, X-Large 3-pack	3 pair	-	\$9.00
1954	Diabetic Socks, White, Large 3-pack	3 pair	-	\$9.00
1953	Diabetic Socks, White, Medium 3-pack	3 pair	-	\$9.00
1955	Diabetic Socks, White, X-Large 3-pack	3 pair	-	\$9.00
1997	Glucose Tablets	50 ct	-	\$10.00
1960	Ultra Soft Padded Diabetic Sock, Black, Large 2-pack	2 pair	-	\$11.00
1959	Ultra Soft Padded Diabetic Sock, Black, Medium 2-pack	2 pair	-	\$11.00
1961	Ultra Soft Padded Diabetic Sock, Black, X-Large 2-pack	2 pair	-	\$11.00
1963	Ultra Soft Padded Diabetic Sock, White, Large 2-pack	2 pair	-	\$11.00
1962	Ultra Soft Padded Diabetic Sock, White, Medium 2-pack	2 pair	-	\$11.00
1964	Ultra Soft Padded Diabetic Sock, White, X-Large 2-pack	2 pair	-	\$11.00
<b>DIAGNOSTICS</b>				
1982	Activity Tracker	1 ct	-	\$52.00
1935	Bathroom Scale ‡\$	1 ct	-	\$45.00
1981	Bathroom Scale, Talking ‡\$	1 ct	-	\$57.00

Item #	Product	Packaging	Strength	Price
1253	Blood Pressure Monitor, Desktop Automatic ‡	1 ct	-	\$45.00
1503	Blood Pressure Monitor, Desktop Talking ‡	1 ct	-	\$55.00
1501	Blood Pressure Monitor, Wrist ‡	1 ct	-	\$35.00
1502	Blood Pressure Monitor, Wrist Talking ‡	1 ct	-	\$40.00
1416	EZ Detect Colon Cancer Test Kit ‡	1 ct	-	\$16.00
1794	Fever Strip Thermometer	1 ct	-	\$8.00
1505	Finger Pulse Oximeter ‡	1 ct		\$40.00
1771	Heart Rate Monitor Watch ‡	1 ct	-	\$40.00
1251	Home Access Cholesterol Test ‡	1 kit	-	\$30.00
1789	Peak Flow Meter ‡	1 ct	-	\$17.00
1752	Thermometer Probe Covers	30 ct	-	\$3.50
1063	Thermometer, Digital 60 seconds	1 ct		\$8.00
1285	Thermometer, Digital Ear	1 ct		\$30.00
1697	Thermometer, Flexible Tip, Digital 10 seconds	1 ct		\$13.00
1925	Thermometer, Talking Ear and Forehead	1 ct	-	\$50.00
<b>EYE &amp; EAR CARE</b>				
1192	Artificial Tears Drops	.5 oz	-	\$6.00
1199	Clear Eyes Eye Drops	.2 oz	-	\$6.00
1742	Cotton Tipped Swabs	300 ct	-	\$5.50
1841	Ear Pain Relief Ear Drops	10 ml	-	\$13.00
1190	Ear Wax Removal Drops	15 ml	6.50%	\$7.00
1363	Ear Wax Removal System with Rubber Bulb	15 ml	6.50%	\$9.00
1806	Irritation Relief Eye Drops	15 ml	-	\$9.50
1468	Multi-Purpose Contact Lens Solution	12 oz	-	\$8.00
1061	Redness Relief Eye Drops	15 ml	0.05 %	\$5.00
1905	Stye Eye Compress	1 ct	-	\$11.00
1906	Stye Eye Ointment	3.5 gm	-	\$11.50
1910	Swim-Ear Ear Drops	1 oz	-	\$7.50
<b>FIRST AID</b>				
1344	Adhesive Bandages	60 ct	-	\$6.00
1803	After Bite Relief	.5 oz	-	\$10.00
1200	Alcohol Pads *	100 ct	70%	\$5.00
1808	Antiseptic Skin Cleanser	8 oz	-	\$11.00

Item #	Product	Packaging	Strength	Price
1201	Antiseptic Towelettes	100 ct	-	\$7.50
1020	Bacitracin Ointment	1 oz	500 U / gm	\$6.50
1142	Bactine Solution	4 oz	-	\$10.00
1667	Band-Aid Clear Comfort-Flex Bandage, Assorted Sizes	45 ct	-	\$7.00
1144	Caldyphen Clear (Anti-Itch Lotion)	6 oz	1%	\$8.00
1223	Conforming Stretch Gauze Sterile Bandages - 3" x 4.1 yd	12 ct	-	\$8.00
1763	Cotton Balls	300 ct	-	\$4.50
1669	Cotton Tipped Applicator - 6"	1,000 ct	-	\$11.50
1140	Diphenhydramine HCL / Zinc Acetate (Anti-Itch Cream)	1 oz	-	\$6.00
1207	Elastic Bandage - 2" x 4.5 yd	1 ct	-	\$6.00
1209	Elastic Bandage - 3" x 5 yd	1 ct	-	\$6.50
1211	Elastic Bandage - 4" x 5 yd	1 ct	-	\$7.00
1213	Elastic Bandage - 6" x 5 yd	1 ct	-	\$8.00
1738	First Aid Kit, 175 Pieces	1 ct	-	\$15.00
1947	First Aid Kit, 20 Pieces	1 ct	-	\$7.00
1215	First Aid Kit, 75 Pieces	1 ct	-	\$10.00
1062	Hot/Cold Pack, 1 small & 1 large	1 ct	-	\$9.00
1074	Hydrocortisone 1% Cream	1 oz	1%	\$6.00
1228	Hydrogen Peroxide	16 oz	3%	\$5.00
1796	Insect Repellant Spray - Deet	4 oz	30%	\$12.00
1867	Insect Repellant Spray - Deet	2 oz	30%	\$8.50
1868	Insect Repellant Spray - Deet	8 oz	30%	\$16.50
1203	Iodine Solution Antiseptic	4 oz	-	\$7.50
1713	Isopropyl Alcohol	16 oz	70%	\$6.00
1229	Isopropyl Alcohol, Wintergreen	16 oz	70%	\$6.50
1676	Johnson & Johnson Gauze Pad - 2" x 2"	25 ct	-	\$6.00
1872	Liquid Bandage	.45 oz	-	\$10.00
1326	Neosporin + Pain Relief	.5 oz	-	\$10.00
1840	Nitrile Exam Gloves	100 ct		\$16.00
2018	Petroleum Jelly	4 oz	-	\$7.00
1896	Procedural Face Masks with Earloops	50 ct		\$30.00
1217	Tape, Paper Surgical - 1" x 10 yd	1 ct	-	\$6.00

Item #	Product	Packaging	Strength	Price
1218	Tape, Paper Surgical - 2" x 10 yd	1 ct	-	\$7.00
1219	Tape, Silk Surgical - 1" x 10 yd	1 ct	-	\$5.50
1220	Tape, Silk Surgical - 2" x 10 yd	1 ct	-	\$7.50
1221	Tape, Transparent Surgical - 1" x 10 yd	1 ct	-	\$5.50
1222	Tape, Transparent Surgical - 2" x 10 yd	1 ct	-	\$7.00
1014	Triple Antibiotic Ointment	1 oz	-	\$8.00
<b>FOOT CARE</b>				
1784	Bunion Guard	1 ct	-	\$9.50
1238	Callus Remover Pads	6 ct	-	\$8.00
1236	Corn Remover Pads	9 ct	-	\$7.50
1785	Hammer Toe Crest	1 ct	-	\$11.00
1786	Lamb's Wool Padding	1 ct	-	\$7.00
1240	Medicated Foot Powder	5 oz	-	\$7.50
1782	Moleskin Sheets Plus	4 ct	-	\$7.00
1787	Toe Protector, Large	1 ct	-	\$9.00
1788	Toe Protector, Small	1 ct	-	\$9.00
1783	Toe Separator	6 ct	-	\$7.00
<b>HEMORRHOIDAL PREPARATIONS</b>				
1066	Hemorrhoidal Ointment	2 oz	-	\$9.00
1247	Hemorrhoidal Suppository	12 ct	-	\$7.00
1364	Pre-moist Hemorrhoid Pads	100 ct	-	\$9.00
1248	Preparation H Cream	26 gm	-	\$12.00
1895	Preparation H Medicated Wipes	48 ct	-	\$11.00
<b>HOME AIDS</b>				
1836	CPAP Pillow Fiber Filled	1 ct	-	\$60.00
1837	CPAP Pillow Memory Foam	1 ct	-	\$90.00
1732	Cushion, Foam Ring	1 ct	-	\$22.00
1466	Cushion, Gel / Foam Seat	1 ct	-	\$35.00
1731	Cushion, Lumbar	1 ct	-	\$20.00
1753	Elastic Mattress Cover - 80" x 36" x 6"	1 ct	-	\$7.50
1795	Humidifier, Ultra-Sonic Cool Mist	1 ct	-	\$60.00
1936	Hypoallergenic Pillow	1 ct	-	\$50.00
1756	Kitchen Scale, Dial ‡	1 ct	-	\$7.50
2016	Kitchen Scale, Digital ‡	1 ct	-	\$25.00

Item #	Product	Packaging	Strength	Price
2017	Medicine Bottle Opener with Magnifier	1 ct	-	\$10.00
1933	Pill Crusher with Storage	1 ct	-	\$10.00
1932	Pill Cutter with Safety Shield	1 ct	-	\$10.00
1799	Sharps Container, 1 gallon	1 ct	-	\$7.50
1934	Weekly AM/PM Pill Case	1 ct	-	\$10.00
<b>INCONTINENCE SUPPLIES</b>				
1300	A & D Ointment	2 oz	-	\$7.00
2027	Adult Briefs, Large - 44" to 58" *	24 ct	-	\$20.00
2026	Adult Briefs, Medium - 32" to 44" *	24 ct	-	\$19.00
2028	Adult Briefs, X-Large - 58" to 63" *	20 ct	-	\$20.00
1811	Attends Discreet Men's Guard	20 ct	-	\$14.00
1810	Attends Discreet Men's Shield	20 ct	-	\$13.00
1812	Attends Discreet Women's Maximum Bladder Control Pad	20 ct	-	\$20.00
1813	Attends Discreet Women's Moderate Bladder Control Pad	20 ct	-	\$15.50
1815	Attends Discreet Women's Panty Liner	28 ct	-	\$9.00
1814	Attends Discreet Women's Ultimate Bladder Control Pad	20 ct	-	\$22.00
1816	Attends Discreet Women's Ultrathin Pad	20 ct	-	\$11.00
1302	Barrier Cream	4 oz	-	\$9.00
1479	Bladder Control Shaped Pad, Heavy Absorbency *	24 ct	-	\$17.00
1480	Bladder Control Shaped Pad, Maximum Absorbency *	18 ct	-	\$17.00
1478	Bladder Control Shaped Pad, Moderate Absorbency *	24 ct	-	\$17.00
1026	Disposable Underwear, Large - 44" to 58" *	18 ct	-	\$16.00
1021	Disposable Underwear, Medium - 34" to 44" *	20 ct	-	\$16.00
1027	Disposable Underwear, X-Large - 58" to 68" *	14 ct	-	\$16.00
1928	Flushable Wipes	24 ct	-	\$8.00
1202	Lantiseptic Skin Protectant Ointment	4 oz	50%	\$12.00
1884	No-Rinse Body Wash	8 oz	-	\$12.00
1994	Premier Adult Briefs, Large - 44" to 58" *	12 ct	-	\$34.00
1993	Premier Adult Briefs, Medium - 32" to 44" *	14 ct	-	\$34.00
1995	Premier Adult Briefs, X-Large - 58" to 63" *	10 ct	-	\$34.00



Item #	Product	Packaging	Strength	Price
1991	Premier Disposable Underwear, Large - 44" to 58" *	16 ct	-	\$34.00
1990	Premier Disposable Underwear, Medium - 36" to 44" *	18 ct	-	\$34.00
1992	Premier Disposable Underwear, X-Large - 56" to 68" *	14 ct	-	\$34.00
1476	Underpad, Disposable - 23" x 24" *	50 ct	-	\$16.00
2029	Underpad, Disposable - 23" x 36" *	15 ct	-	\$11.00
1477	Underpad, Disposable - 30" x 30" *	10 ct	-	\$10.00
1996	Underpad, Extra Absorbent Air Permeable, 30" x 36" *	5 ct	-	\$15.00
1348	Washcloth with Lanolin	64 ct	-	\$8.50
<b>NUTRITIONAL SUPPLEMENTS</b>				
2100	BOOST Nutritional Supplement: Chocolate 8oz each	27	-	\$45.00
2101	BOOST Nutritional Supplement: Vanilla 8oz each	27	-	\$45.00
2106	Ensure Powder Nutritional Supplement 14oz	1	-	\$15.00
2104	Glucerna: Chocolate 8oz each	6	-	\$18.00
2102	Glucerna: Chocolate 8oz each	24	-	\$58.00
2105	Glucerna: Vanilla 8oz each	6	-	\$18.00
2103	Glucerna: Vanilla 8oz each	24	-	\$58.00
<b>PAIN RELIEF AIDS</b>				
1809	Arthritis Hot Pain Relief Cream	3 oz	10%	\$7.00
1924	Aspercreme	1.25 oz	-	\$9.00
1944	Cold/Hot Menthol Medicated Patch	5 ct	5%	\$10.00
1845	Epsom Salt	4 lb	-	\$7.75
1846	Fast Freeze Pain Relief Spray	4 oz	-	\$13.50
2024	Heating Pad Digital, 12" x 15" *	1 ct	-	\$45.00
1943	Heating Pad Wrap For Shoulder, Neck, and Back, 25" x 26" *	1 ct	-	\$55.00
1861	Heating Pad, 12" X 15" *	1 ct	-	\$26.00
1942	Heating Pad, X-Large, 12" x 24" *	1 ct	-	\$35.00
1859	HeatWraps - Back & Hip	2 ct	-	\$11.00
1860	HeatWraps - Neck, Shoulder, & Wrist	3 ct	-	\$11.00
1761	Ice Bag - 9"	1 ct	-	\$9.00
1871	Lidocaine Patch	5 ct	4%	\$13.00
1923	Menthol Gel	8 oz	2%	\$9.00

Item #	Product	Packaging	Strength	Price
1762	Pain Relief Mask	1 ct	-	\$9.00
1475	Pain Relieving Muscle Rub	2 oz	2.5%	\$6.00
1739	Salonpas Pain Relief Patches	6 ct	-	\$14.00
1912	Thermacare Lower Back & Hip	2 ct	-	\$15.00
1913	Thermacare Menstrual Relief	3 ct	-	\$15.00
1781	Warm or Cold Water Bottle, Rubber Latex	1 ct	-	\$10.00
<b>PAIN RELIEVERS &amp; FEVER REDUCERS</b>				
1423	Acetaminophen (Children's Pain Relief Chewables)	30 ct	80 mg	\$6.50
1105	Acetaminophen (Pain Reliever, Extra Strength)	50 ct	500 mg	\$5.75
1600	Acetaminophen (Pain Reliever, Extra Strength)	100 ct	500 mg	\$7.00
2002	Acetaminophen (Pain Reliever, Extra Strength)	500 ct	500 mg	\$15.00
2030	Acetaminophen (Pain Reliever, Extra Strength)	24 ct	500 mg	\$4.00
1001	Acetaminophen (Pain Reliever, Regular Strength)	100 ct	325 mg	\$6.50
1104	Aleve	100 ct	220 mg	\$17.25
1311	Arthritis Pain Reliever	100 ct	650 mg	\$12.00
1095	Aspirin	100 ct	325 mg	\$5.50
1096	Aspirin, Enteric Coated	100 ct	325 mg	\$6.00
1002	Aspirin, Enteric Coated, Low Dose	120 ct	81 mg	\$6.00
1998	Aspirin, Enteric Coated, Low Dose	500 ct	81 mg	\$12.00
1802	Aspirin, Low Dose, Chewables	36 ct	81 mg	\$5.50
1720	Bayer Back & Body Pain, Extra Strength	24 ct	500 mg / 32.5 mg	\$7.00
1367	Capsaicin (Pain Relief Cream)	2 oz	0.025%	\$9.50
1004	Ibuprofen (Pain Reliever / Fever Reducer)	100 ct	200 mg	\$8.00
2001	Ibuprofen (Pain Reliever / Fever Reducer)	500 ct	200 mg	\$16.00
2031	Ibuprofen (Pain Reliever / Fever Reducer)	24 ct	200 mg	\$4.00
1041	Naproxen Sodium (Pain Reliever / Fever Reducer)	50 ct	220 mg	\$7.00
1097	Naproxen Sodium (Pain Reliever / Fever Reducer)	100 ct	220 mg	\$10.00
2032	Naproxen Sodium (Pain Reliever / Fever Reducer)	24 ct	220 mg	\$5.00
1365	Pain Reliever Plus (Acetaminophen 250mg / Aspirin 250 mg / Caffeine 65 mg)	100 ct	250 mg / 250 mg / 65 mg	\$8.00
1332	Pain Reliever, PM (Acetaminophen, Extra Strength / Diphenhydramine 25 mg)	100 ct	500 mg / 25 mg	\$9.00
<b>PEDICULICIDE (LICE TREATMENT)</b>				
1929	Lice Elimination Kit	1 kit	-	\$27.00

Item #	Product	Packaging	Strength	Price
1269	Lice Treatment Rinse (Permethrin)	59 ml	1%	\$16.00
1271	Lice Treatment Shampoo	4 oz	-	\$11.00
<b>SKIN &amp; SUN CARE</b>				
1076	Acne Gel 10% Benzoyl Peroxide	1.5 oz	10%	\$8.50
1368	Ammonium Lactate Moisturizing Lotion	8 oz	12%	\$12.00
1821	Calamine Skin Protectant Lotion	6 oz	-	\$7.00
1065	Hand Sanitizer	8 oz		\$6.50
1893	Moisturizing Body Lotion with Aloe	8 oz	-	\$7.50
1852	Scar Gel	1 oz	-	\$11.00
1284	Sunscreen Lotion SPF 30	3.5 oz	-	\$7.50
1908	Sunscreen Lotion SPF 30	1.5 oz	-	\$5.00
<b>SLEEP AIDS</b>				
1725	Nasal Strips, Large	30 ct	-	\$13.00
1724	Nasal Strips, Medium	30 ct	-	\$13.00
<b>SMOKING CESSATION</b>				
1372	Nicotine Gum ‡	50 ct	4 mg	\$25.00
1281	Nicotine Lozenges ‡	72 ct	4 mg	\$42.00
1369	Nicotine Patch, Step 1 ‡	14 ct	21 mg / 24 hr	\$40.00
1370	Nicotine Patch, Step 2 ‡	14 ct	14 mg / 24 hr	\$40.00
1371	Nicotine Patch, Step 3 ‡	14 ct	7 mg / 24 hr	\$40.00
<b>SUPPORTS &amp; BRACES</b>				
1225	Ankle Support	1 ct	-	\$10.00
1765	Arthritis Gloves, Large	1 pair	-	\$27.00
1766	Arthritis Gloves, Medium	1 pair	-	\$27.00
1767	Arthritis Gloves, Small	1 pair	-	\$27.00
2013	Arthritis Knee Sleeve, Large	1 ct	-	\$25.00
2012	Arthritis Knee Sleeve, Medium	1 ct	-	\$25.00
2011	Arthritis Knee Sleeve, Small	1 ct	-	\$25.00
2014	Arthritis Knee Sleeve, X-Large	1 ct	-	\$25.00
1487	Back Support Elastic - 24" to 46"	1 ct	-	\$23.00
1488	Back Support Elastic with Lumbar	1 ct	-	\$27.00
1768	Carpal Tunnel Brace, Large	1 ct	-	\$25.00
1769	Carpal Tunnel Brace, Medium	1 ct	-	\$25.00

Item #	Product	Packaging	Strength	Price
1770	Carpal Tunnel Brace, Small	1 ct	-	\$25.00
1399	Compression Knee High Socks, Men's Black, Large (Shoe Size 10.5 - 12) ‡	1 pair	15 - 20 mmHg	\$18.00
1398	Compression Knee High Socks, Men's Black, Medium (Shoe Size 8 - 10) ‡	1 pair	15 - 20 mmHg	\$18.00
1401	Compression Knee High Socks, Men's White, Large (Shoe Size 10.5 - 12) ‡	1 pair	15 - 20 mmHg	\$18.00
1400	Compression Knee High Socks, Men's White, Medium (Shoe Size 8 - 10) ‡	1 pair	15 - 20 mmHg	\$18.00
1408	Compression Knee High Socks, Women's Beige, Large (Shoe Size 8 - 10.5)	1 pair	8 - 15 mmHg	\$18.00
1407	Compression Knee High Socks, Women's Beige, Medium (Shoe Size 5.5 - 7.5)	1 pair	8 - 15 mmHg	\$18.00
1406	Compression Knee High Socks, Women's Beige, Small (Shoe Size 4 - 5)	1 pair	8 - 15 mmHg	\$18.00
1411	Compression Knee High Socks, Women's Black, Large (Shoe Size 8 - 10.5)	1 pair	8 - 15 mmHg	\$18.00
1410	Compression Knee High Socks, Women's Black, Medium (Shoe Size 5.5 - 7.5)	1 pair	8 - 15 mmHg	\$18.00
1409	Compression Knee High Socks, Women's Black, Small (Shoe Size 4-5)	1 pair	8 - 15 mmHg	\$18.00
1758	Deluxe Criss Cross Back Support, Large - 38" to 42"	1 ct	-	\$24.00
1759	Deluxe Criss Cross Back Support, Medium - 33" to 37"	1 ct	-	\$24.00
1760	Deluxe Criss Cross Back Support, Small - 28" to 32"	1 ct	-	\$24.00
1224	Elbow Support	1 ct	-	\$15.00
1772	Heel & Elbow Protector, Large	1 ct	-	\$12.00
1773	Heel & Elbow Protector, Medium	1 ct	-	\$12.00
1774	Heel & Elbow Protector, Small	1 ct	-	\$12.00
1775	Heel & Elbow Protector, X-Large	1 ct	-	\$12.00
1864	Hip Protector, Large	1 ct	-	\$45.00
1863	Hip Protector, Medium	1 ct	-	\$45.00
1862	Hip Protector, Small	1 ct	-	\$45.00
1865	Hip Protector, X-Large	1 ct	-	\$45.00
1465	Knee Stabilizer	1 ct	-	\$23.00
1483	Knee Support, Elastic, Large	1 ct	-	\$11.00
1486	Knee Support, Elastic, Large with Stays	1 ct	-	\$19.00

Item #	Product	Packaging	Strength	Price
1482	Knee Support, Elastic, Medium	1 ct	-	\$11.00
1485	Knee Support, Elastic, Medium with Stays	1 ct	-	\$19.00
1481	Knee Support, Elastic, Small	1 ct	-	\$11.00
1484	Knee Support, Elastic, Small with Stays	1 ct	-	\$19.00
1463	Night Wrist Support	1 ct	-	\$30.00
1898	Protective Arm Sleeve - Large	1 pair	-	\$24.25
1897	Protective Arm Sleeve - Small	1 pair	-	\$20.00
1899	Protective Arm Sleeve - X-Large	1 pair	-	\$27.25
1457	Rib Belt - Female (one size fits most)	1 ct	-	\$19.00
1456	Rib Belt - Male (one size fits most)	1 ct	-	\$19.00
1778	Thumb Brace	1 ct	-	\$18.00
1920	Wrist Compression - Large	1 ct	-	\$14.00
1919	Wrist Compression - Medium	1 ct	-	\$14.00
1918	Wrist Compression - Small	1 ct	-	\$14.00
1921	Wrist Compression - X-Large	1 ct	-	\$14.00
1230	Wrist Splint	1 ct	-	\$22.00
1227	Wrist Support	1 ct	-	\$10.00
<b>VITAMINS &amp; MINERALS</b>				
1805	Airborne Immune Support Chewables ‡	32 ct	-	\$16.00
1820	Biotin Gummy ‡	60 ct	2,500 mcg	\$13.00
1373	Calcium + Vitamin D3 ‡	60 ct	600 mg / 400 IU	\$7.00
1823	Calcium + Vitamin D3 Gummy ‡	60 ct	250 mg / 500 IU	\$13.00
1291	Calcium ‡	60 ct	600 mg	\$7.00
1945	Calcium Chew, Chocolate ‡	60 ct	500 mg / 1,000 IU	\$11.00
1420	Centrum Silver Chewables ‡	60 ct	-	\$18.00
1827	Cod Liver Oil ‡	100 ct	-	\$8.75
1829	Coenzyme Q-10 ‡	30 ct	50 mg	\$12.00
1393	Daily Multivitamin ‡	100 ct	-	\$8.00
1972	Daily Multivitamin Gummy ‡	120 ct	-	\$12.50
1385	Daily Multivitamin with Minerals ‡	100 ct	-	\$8.50
1737	DHEA Hormonal Supplement ‡	50 ct	50 mg	\$12.00
1417	Ferrous Gluconate (Iron Supplement) ‡	110 ct	27 mg	\$8.00
1376	Ferrous Sulfate (Iron Supplement) ‡	100 ct	325 mg	\$7.50
1741	Fish Oil, Soft Gels ‡	60 ct	1,000 mg	\$8.00

Item #	Product	Packaging	Strength	Price
1849	<b>Flaxseed ‡</b>	100 ct	1,000 mg	\$11.00
1850	<b>Folic Acid ‡</b>	100 ct	800 mcg	\$6.50
1114	<b>Glucosamine (Joint Health Support) ‡</b>	60 ct	500 mg	\$11.00
1003	<b>Glucosamine / Chondroitin (Joint Health Support) ‡</b>	60 ct	250 mg / 200 mg	\$12.00
1975	<b>Healthy Eyes with Lutein ‡</b>	60 ct	-	\$8.50
1866	<b>Immune Support Chewables ‡</b>	50 ct	-	\$11.50
1869	<b>Leg Cramps Pain Relief Caplets ‡</b>	50 ct	-	\$14.00
1870	<b>Leg Cramps Pain Relief Caplets ‡</b>	100 ct	-	\$17.00
1418	<b>Magnesium ‡</b>	110 ct	250 mg	\$7.00
1879	<b>Melatonin ‡</b>	100 ct	5 mg	\$12.00
1971	<b>Melatonin Gummy ‡</b>	120 ct	2.5 mg	\$15.00
2075	<b>Natural Beta Carotene ‡</b>	100 ct	25,000 IU	\$12.00
2091	<b>Natural Biotin ‡</b>	60 ct	5,000 mcg	\$14.00
2076	<b>Natural Cod Liver Oil ‡</b>	100 ct	-	\$11.00
2092	<b>Natural Coenzyme Q-10 ‡</b>	45 ct	100 mg	\$18.00
2073	<b>Natural Ferrous Gluconate (Iron Supplement) ‡</b>	100 ct	27 mg	\$11.00
2093	<b>Natural Folic Acid ‡</b>	100 ct	800 mcg	\$9.00
2089	<b>Natural Magnesium ‡</b>	60 ct	480 mg	\$10.00
2094	<b>Natural Melatonin ‡</b>	60 ct	5 mg	\$12.00
2095	<b>Natural Niacin, No Flush ‡</b>	30 ct	500 mg	\$12.00
2088	<b>Natural Organic Multivitamin ‡</b>	60 ct	-	\$16.00
2074	<b>Natural Vitamin A ‡</b>	100 ct	10,000 IU	\$10.50
2080	<b>Natural Vitamin B-1 ‡</b>	100 ct	100 mg	\$12.00
2082	<b>Natural Vitamin B-12 ‡</b>	60 ct	500 mcg	\$10.00
2083	<b>Natural Vitamin B-12, Sublingual ‡</b>	60 ct	5,000 mcg	\$18.00
2081	<b>Natural Vitamin B-6 ‡</b>	100 ct	100 mg	\$11.00
2079	<b>Natural Vitamin B-Complex ‡</b>	100 ct	-	\$10.00
2084	<b>Natural Vitamin C ‡</b>	100 ct	1,000 mg	\$14.00
2085	<b>Natural Vitamin C with Rose Hips ‡</b>	60 ct	1,500 mg	\$15.00
2077	<b>Natural Vitamin D3 ‡</b>	100 ct	1,000 IU	\$10.00
2078	<b>Natural Vitamin D3 ‡</b>	60 ct	5,000 IU	\$12.00
2086	<b>Natural Vitamin E, Soft Gels ‡</b>	90 ct	400 IU	\$12.00
2087	<b>Natural Vitamin E, Soft Gels ‡</b>	30 ct	1,000 IU	\$12.00
2090	<b>Natural Zinc ‡</b>	100 ct	50 mg	\$10.00



Item #	Product	Packaging	Strength	Price
1394	Niacin ‡	100 ct	500 mg	\$10.00
1930	Niacin, No Flush ‡	60 ct	500 mg	\$15.00
1976	Omega & DHA Gummy ‡	120 ct	91 mg / 16 mg	\$14.00
1886	One Daily Men's Multivitamin ‡	100 ct	-	\$10.00
1887	One Daily Women's Multivitamin ‡	100 ct	-	\$10.00
1977	Potassium Gluconate ‡	100 ct	595 mg	\$6.00
1395	Rena-Vite ‡	100 ct	-	\$13.50
1392	Senior Multivitamin ‡	90 ct	-	\$11.00
1734	Stress Formula Tablets with Zinc ‡	60 ct	-	\$10.00
1735	Vitafusion Fiber Weight Management ‡	90 ct	-	\$17.50
1379	Vitamin A ‡	100 ct	10,000 IU	\$8.00
1016	Vitamin B-1 ‡	100 ct	100 mg	\$7.50
1381	Vitamin B-12 ‡	100 ct	1,000 mcg	\$11.00
1389	Vitamin B-12 ‡	100 ct	500 mcg	\$6.00
1974	Vitamin B-12, Sublingual ‡	30 ct	5,000 mcg	\$10.00
1388	Vitamin B-6 ‡	100 ct	100 mg	\$8.00
1382	Vitamin B-Complex ‡	100 ct	-	\$8.00
1915	Vitamin B-Complex Gummy ‡	70 ct	-	\$13.00
1017	Vitamin C ‡	100 ct	500 mg	\$7.50
1706	Vitamin C ‡	100 ct	1,000 mg	\$10.00
1916	Vitamin C Gummy ‡	60 ct	125 mg	\$12.00
1383	Vitamin D3 ‡	100 ct	400 IU	\$6.00
1390	Vitamin D3 ‡	100 ct	1,000 IU	\$8.50
1973	Vitamin D3 ‡	100 ct	5,000 IU	\$10.00
1978	Vitamin D3 Gummy ‡	120 ct	1,000 IU	\$13.00
1384	Vitamin E, Soft Gels ‡	100 ct	400 IU	\$11.00
1391	Vitamin E, Soft Gels ‡	100 ct	100 IU	\$6.00
1419	Zinc Chelated ‡	100 ct	50 mg	\$7.00
<b>WART REMOVER</b>				
1288	Dr. Scholl's Wart Removal System	20 ct	-	\$15.00
1075	Wart Remover, Liquid	9 ml	17%	\$10.00
1289	Wartners Wart Removal System	1 ct	-	\$19.00

## NOTICES

- If you disenroll from HAP, your OTC benefit will automatically terminate.
- Health Alliance Plan (HAP) has HMO, HMO-POS, PPO plans with Medicare contracts. HAP Empowered Duals (HMO SNP) is a Medicare health plan with a Medicare contract and a contract with the Michigan Medicaid Program. Enrollment depends on contract renewals.
- This information is available for free in other languages. Please call our customer service number at 1-800-801-1770 (TTY: 711) (Senior Plus HMO/HMO-POS) 1-800-848-4844 (TTY: 711) (Empowered Duals HMO SNP) or 1-888-658-2536 (Senior Plus PPO), April 1st – September 30th: Monday through Friday, 8:00 a.m. to 8:00 p.m.; October 1st – March 31st : Seven days a week, 8:00 a.m. to 8:00 p.m. EST.
- The health information provided in the catalog is general in nature and is not medical advice or a substitute for professional health care.

*\* Part B/D - Under certain circumstances some items may be covered under either Part B or Part D. When you are eligible to receive these items under Part B or Part D you may not purchase these items through your Part C supplemental OTC benefit. For your convenience, we've marked these items with an (\*).*

*‡ Dual-purpose items are medicines and products that can be used for either a medical condition or for general health and well-being. In order to purchase these items under your plan, your personal physician must recommend them to you for a specific diagnosed condition. Please speak to your physician before ordering these items.*

*§ Scales are only available to members with congestive heart failure or liver disease in order to monitor weight changes. Scales are not allowable for other conditions or diseases. Please discuss with your healthcare provider before ordering.*





**[hap.org/otc](https://hap.org/otc)**



MEDICARE  
SOLUTIONS

# 2021 OVER-THE-COUNTER (OTC) PRODUCT ORDER FORM

## STEP 1 - COMPLETE YOUR INFORMATION BELOW

Member ID (found on plan member ID card)

Date of Birth

First Name

Last Name and Suffix

MI

Street Number

Street Name

Apt/Suite #

City

State

Zip Code

Daytime Phone

Email (Optional)

Please check box if this is a new address ☐

Cash, checks, credit cards, or money orders are not accepted under this OTC benefit.

Item #	Product	Quantity	Unit Price	TOTAL
1	<input type="text"/>	<input type="text"/>	\$ <input type="text"/> . <input type="text"/>	\$ <input type="text"/> . <input type="text"/>
2	<input type="text"/>	<input type="text"/>	\$ <input type="text"/> . <input type="text"/>	\$ <input type="text"/> . <input type="text"/>
3	<input type="text"/>	<input type="text"/>	\$ <input type="text"/> . <input type="text"/>	\$ <input type="text"/> . <input type="text"/>
4	<input type="text"/>	<input type="text"/>	\$ <input type="text"/> . <input type="text"/>	\$ <input type="text"/> . <input type="text"/>
5	<input type="text"/>	<input type="text"/>	\$ <input type="text"/> . <input type="text"/>	\$ <input type="text"/> . <input type="text"/>

**Please mail this completed form to the following address:**

**OTC Servicing Center, PO Box 526266  
Miami, FL 33152-9819**

Subtotal from Other Side \$  .

Total Order \$  .

**To order additional products, please see other side. Please mail the completed form back in the postage-paid envelope provided.**

**If you place your order using an order form, your order total will be applied to the quarter in which we receive your form. Please allow up to 10 business days prior to the end of the quarter for your mail order to be processed. Unused allowance does not rollover.**

## STEP 2 - PRODUCT SELECTION (Continued)

Cash, checks, credit cards, or money orders are not accepted under this OTC benefit.

Item #	Product	Quantity	Unit Price	TOTAL
6	<input type="text"/> <input type="text"/> <input type="text"/> <input type="text"/> <input type="text"/>	<input type="text"/> <input type="text"/>	\$ <input type="text"/> <input type="text"/> <input type="text"/> <input type="text"/> . <input type="text"/> <input type="text"/>	\$ <input type="text"/> <input type="text"/> <input type="text"/> <input type="text"/> . <input type="text"/> <input type="text"/>
7	<input type="text"/> <input type="text"/> <input type="text"/> <input type="text"/> <input type="text"/>	<input type="text"/> <input type="text"/>	\$ <input type="text"/> <input type="text"/> <input type="text"/> <input type="text"/> . <input type="text"/> <input type="text"/>	\$ <input type="text"/> <input type="text"/> <input type="text"/> <input type="text"/> . <input type="text"/> <input type="text"/>
8	<input type="text"/> <input type="text"/> <input type="text"/> <input type="text"/> <input type="text"/>	<input type="text"/> <input type="text"/>	\$ <input type="text"/> <input type="text"/> <input type="text"/> <input type="text"/> . <input type="text"/> <input type="text"/>	\$ <input type="text"/> <input type="text"/> <input type="text"/> <input type="text"/> . <input type="text"/> <input type="text"/>
9	<input type="text"/> <input type="text"/> <input type="text"/> <input type="text"/> <input type="text"/>	<input type="text"/> <input type="text"/>	\$ <input type="text"/> <input type="text"/> <input type="text"/> <input type="text"/> . <input type="text"/> <input type="text"/>	\$ <input type="text"/> <input type="text"/> <input type="text"/> <input type="text"/> . <input type="text"/> <input type="text"/>
10	<input type="text"/> <input type="text"/> <input type="text"/> <input type="text"/> <input type="text"/>	<input type="text"/> <input type="text"/>	\$ <input type="text"/> <input type="text"/> <input type="text"/> <input type="text"/> . <input type="text"/> <input type="text"/>	\$ <input type="text"/> <input type="text"/> <input type="text"/> <input type="text"/> . <input type="text"/> <input type="text"/>
11	<input type="text"/> <input type="text"/> <input type="text"/> <input type="text"/> <input type="text"/>	<input type="text"/> <input type="text"/>	\$ <input type="text"/> <input type="text"/> <input type="text"/> <input type="text"/> . <input type="text"/> <input type="text"/>	\$ <input type="text"/> <input type="text"/> <input type="text"/> <input type="text"/> . <input type="text"/> <input type="text"/>
12	<input type="text"/> <input type="text"/> <input type="text"/> <input type="text"/> <input type="text"/>	<input type="text"/> <input type="text"/>	\$ <input type="text"/> <input type="text"/> <input type="text"/> <input type="text"/> . <input type="text"/> <input type="text"/>	\$ <input type="text"/> <input type="text"/> <input type="text"/> <input type="text"/> . <input type="text"/> <input type="text"/>
13	<input type="text"/> <input type="text"/> <input type="text"/> <input type="text"/> <input type="text"/>	<input type="text"/> <input type="text"/>	\$ <input type="text"/> <input type="text"/> <input type="text"/> <input type="text"/> . <input type="text"/> <input type="text"/>	\$ <input type="text"/> <input type="text"/> <input type="text"/> <input type="text"/> . <input type="text"/> <input type="text"/>
14	<input type="text"/> <input type="text"/> <input type="text"/> <input type="text"/> <input type="text"/>	<input type="text"/> <input type="text"/>	\$ <input type="text"/> <input type="text"/> <input type="text"/> <input type="text"/> . <input type="text"/> <input type="text"/>	\$ <input type="text"/> <input type="text"/> <input type="text"/> <input type="text"/> . <input type="text"/> <input type="text"/>
15	<input type="text"/> <input type="text"/> <input type="text"/> <input type="text"/> <input type="text"/>	<input type="text"/> <input type="text"/>	\$ <input type="text"/> <input type="text"/> <input type="text"/> <input type="text"/> . <input type="text"/> <input type="text"/>	\$ <input type="text"/> <input type="text"/> <input type="text"/> <input type="text"/> . <input type="text"/> <input type="text"/>
16	<input type="text"/> <input type="text"/> <input type="text"/> <input type="text"/> <input type="text"/>	<input type="text"/> <input type="text"/>	\$ <input type="text"/> <input type="text"/> <input type="text"/> <input type="text"/> . <input type="text"/> <input type="text"/>	\$ <input type="text"/> <input type="text"/> <input type="text"/> <input type="text"/> . <input type="text"/> <input type="text"/>
17	<input type="text"/> <input type="text"/> <input type="text"/> <input type="text"/> <input type="text"/>	<input type="text"/> <input type="text"/>	\$ <input type="text"/> <input type="text"/> <input type="text"/> <input type="text"/> . <input type="text"/> <input type="text"/>	\$ <input type="text"/> <input type="text"/> <input type="text"/> <input type="text"/> . <input type="text"/> <input type="text"/>
18	<input type="text"/> <input type="text"/> <input type="text"/> <input type="text"/> <input type="text"/>	<input type="text"/> <input type="text"/>	\$ <input type="text"/> <input type="text"/> <input type="text"/> <input type="text"/> . <input type="text"/> <input type="text"/>	\$ <input type="text"/> <input type="text"/> <input type="text"/> <input type="text"/> . <input type="text"/> <input type="text"/>
19	<input type="text"/> <input type="text"/> <input type="text"/> <input type="text"/> <input type="text"/>	<input type="text"/> <input type="text"/>	\$ <input type="text"/> <input type="text"/> <input type="text"/> <input type="text"/> . <input type="text"/> <input type="text"/>	\$ <input type="text"/> <input type="text"/> <input type="text"/> <input type="text"/> . <input type="text"/> <input type="text"/>
20	<input type="text"/> <input type="text"/> <input type="text"/> <input type="text"/> <input type="text"/>	<input type="text"/> <input type="text"/>	\$ <input type="text"/> <input type="text"/> <input type="text"/> <input type="text"/> . <input type="text"/> <input type="text"/>	\$ <input type="text"/> <input type="text"/> <input type="text"/> <input type="text"/> . <input type="text"/> <input type="text"/>
			Subtotal \$	<input type="text"/> <input type="text"/> <input type="text"/> <input type="text"/> . <input type="text"/> <input type="text"/>

***Please mail the completed form back in the postage-paid envelope provided.***

**If you place your order using an order form, your order total will be applied to the quarter in which we receive your form. Please allow up to 10 business days prior to the end of the quarter for your mail order to be processed. Unused allowance does not rollover.**